

The Lindley



LEASING BROCHURE | SAN DIEGO, CA

Now Open!
[solidcore]

Just Signed:



About The Lindley

COLUMBIA DISTRICT / SAN DIEGO

Located in the heart of Downtown San Diego, situated between Little Italy and The Embarcadero, The Columbia District is a core component of the downtown landscape. Home to a healthy mix of high-rise office towers, vibrant retail/restaurants and an elevated residential demographic; it is no surprise The Columbia District is one of the most dynamic pockets of San Diego.

PROPERTY HIGHLIGHTS

- ±10,565 SF retail/restaurant space
- Parking options
- Situated in the core of downtown San Diego
- Offers great proximity to Little Italy and The Embarcadero
- Unique opportunity for locally sourced retailers and restaurateurs
- The Lindley will deliver a high quality and elevated experience



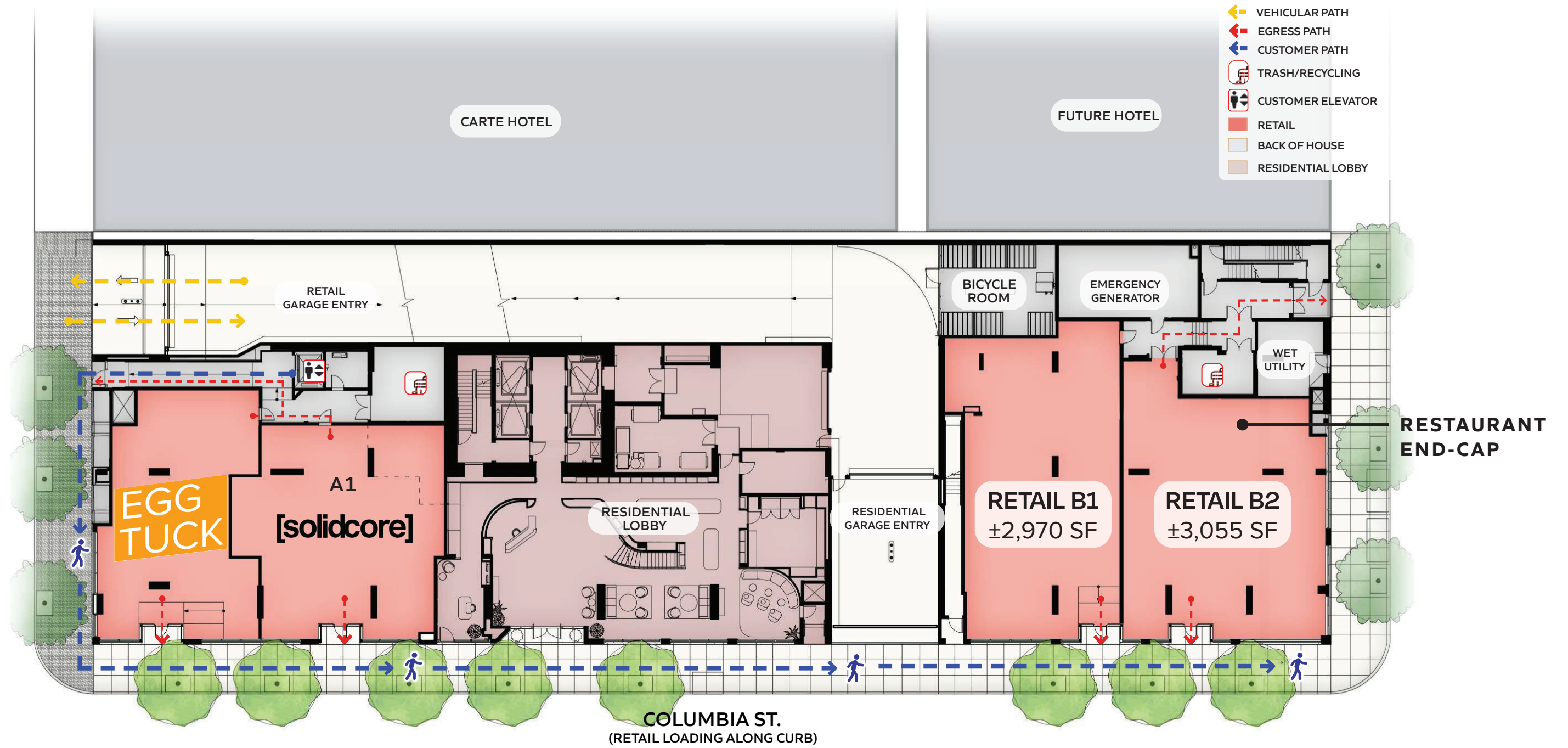
Site Plan



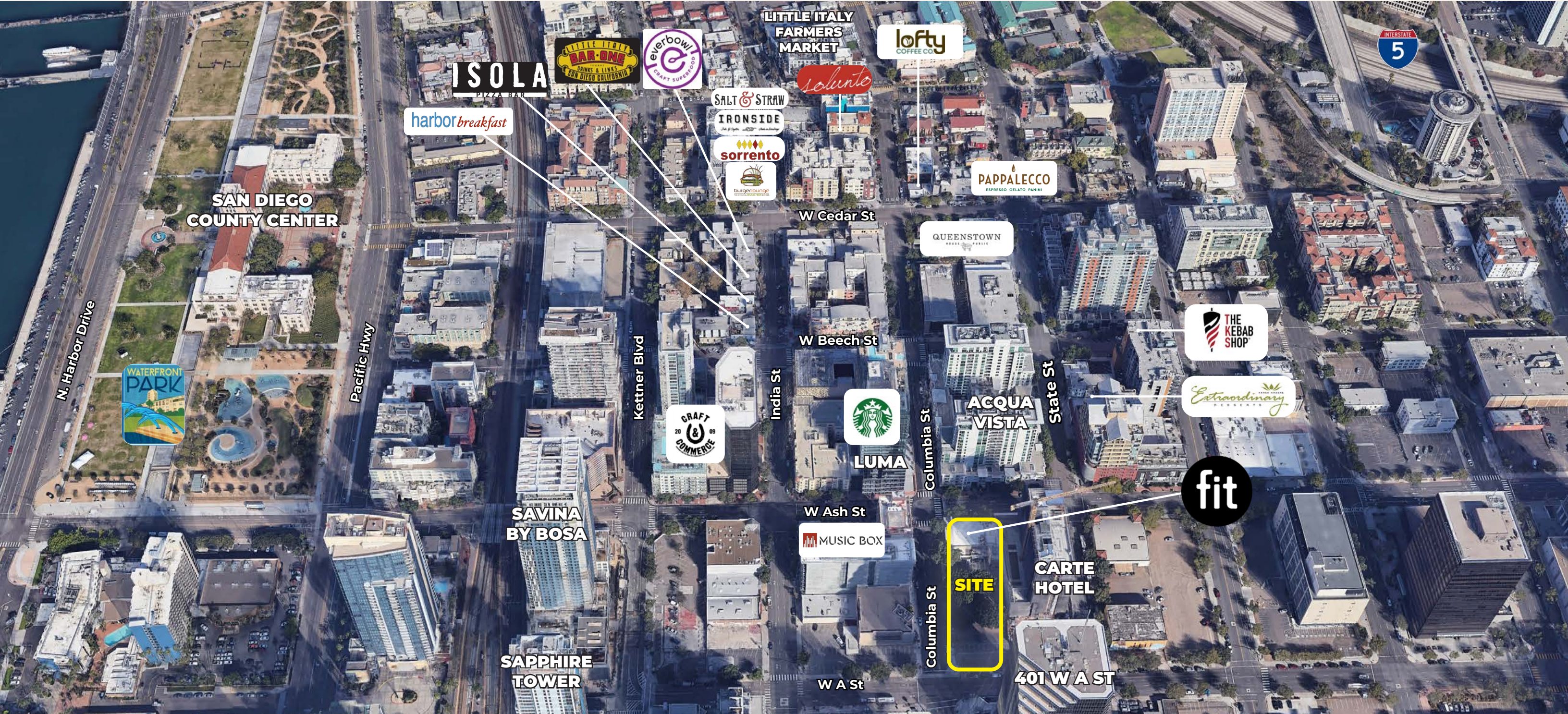
THE LINDLEY
SAN DIEGO

Maximum Demising Plan

- VEHICULAR PATH
- EGRESS PATH
- CUSTOMER PATH
- TRASH/RECYCLING
- CUSTOMER ELEVATOR
- RETAIL
- BACK OF HOUSE
- RESIDENTIAL LOBBY



Neighborhood Aerial



Trade Aerial



DOWNTOWN SAN DIEGO

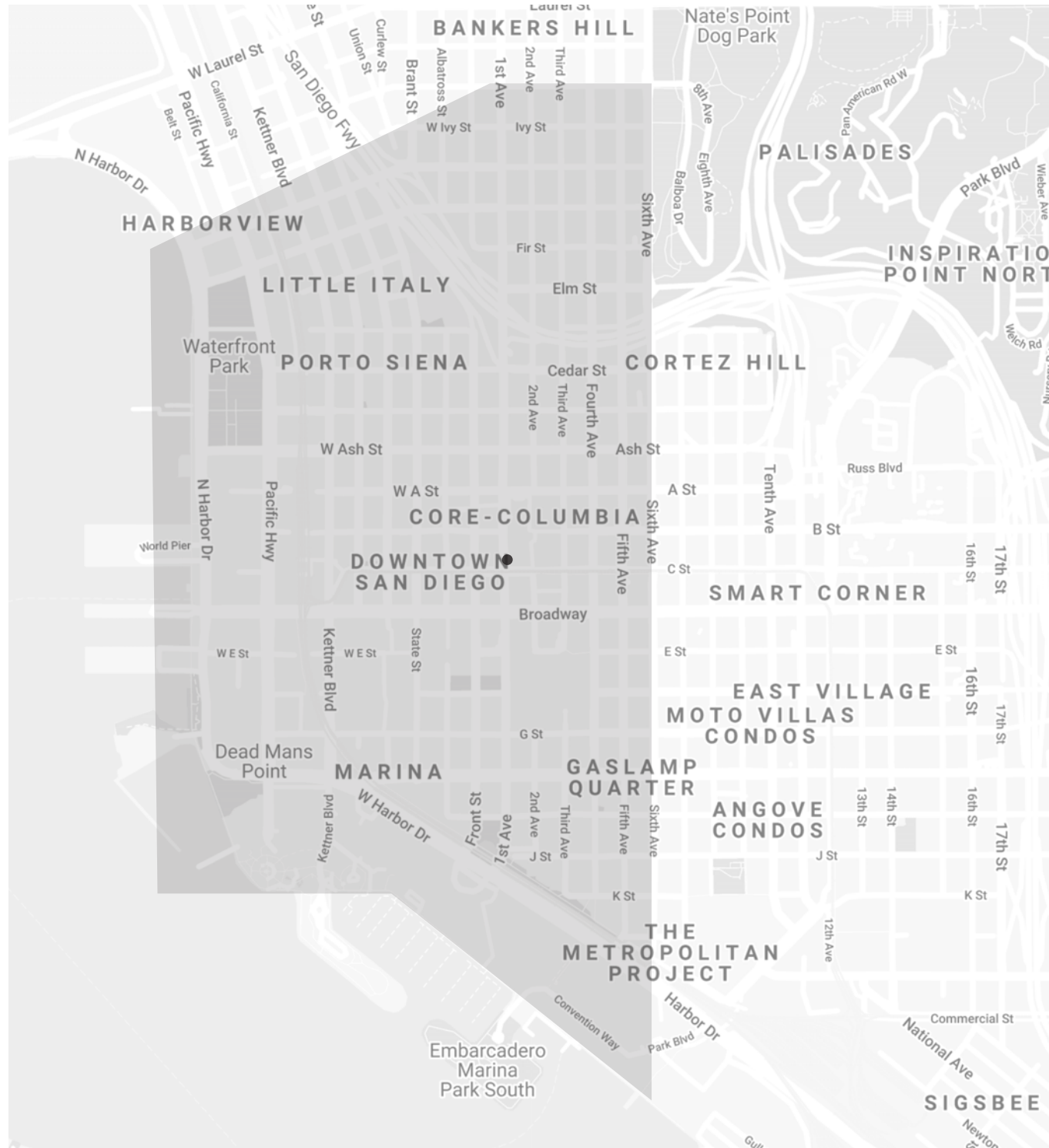
Meet the Neighbors

4 min
WALK TO
LITTLE ITALY

8 min
WALK TO
WATERFRONT PARK



Area Demographics



SAN DIEGO / CALIFORNIA

Population

Estimated Population	23,709
Forecasted Population (2027)	27,192

Daytime Demos

Total Daytime Population	62,934
--------------------------	--------

Median Household Income

Estimated Median Household Income	\$102,337
Median Disposable Income	\$80,539

Avg Household Income

Estimated Average Household Income	\$142,559
Average Disposable Income	\$96,463

Columbia & Ash

Connor Stevens LIC #02016996
858.369.6458 | cstevens@riretail.com

Matt Moser LIC #01772051
858.523.2096 | mmoser@riretail.com

Chris Hodgman LIC #01881298
858.523.2098 | chodgman@riretail.com

RI RETAIL INSITE

lic . 01206760 t. 858 523 2090 w. riretail.com

The information above has been obtained from sources believed to be reliable. While we do not doubt its accuracy, we have not verified it and make no guarantee, warranty, or representation about it. It is your responsibility to independently confirm its accuracy and completeness. Any projections, opinions, assumptions, or estimates used are for example only and do not represent the current or future performance of the property. The value of this transaction to you depends on tax and other factors which should be evaluated by your tax, financial, and legal advisors. You and your advisors should conduct a careful, independent investigation of the property to determine to your satisfaction the suitability of the property for your needs. Photos herein are the property of their respective owners and use of these images without the express written consent of the owner is prohibited.

